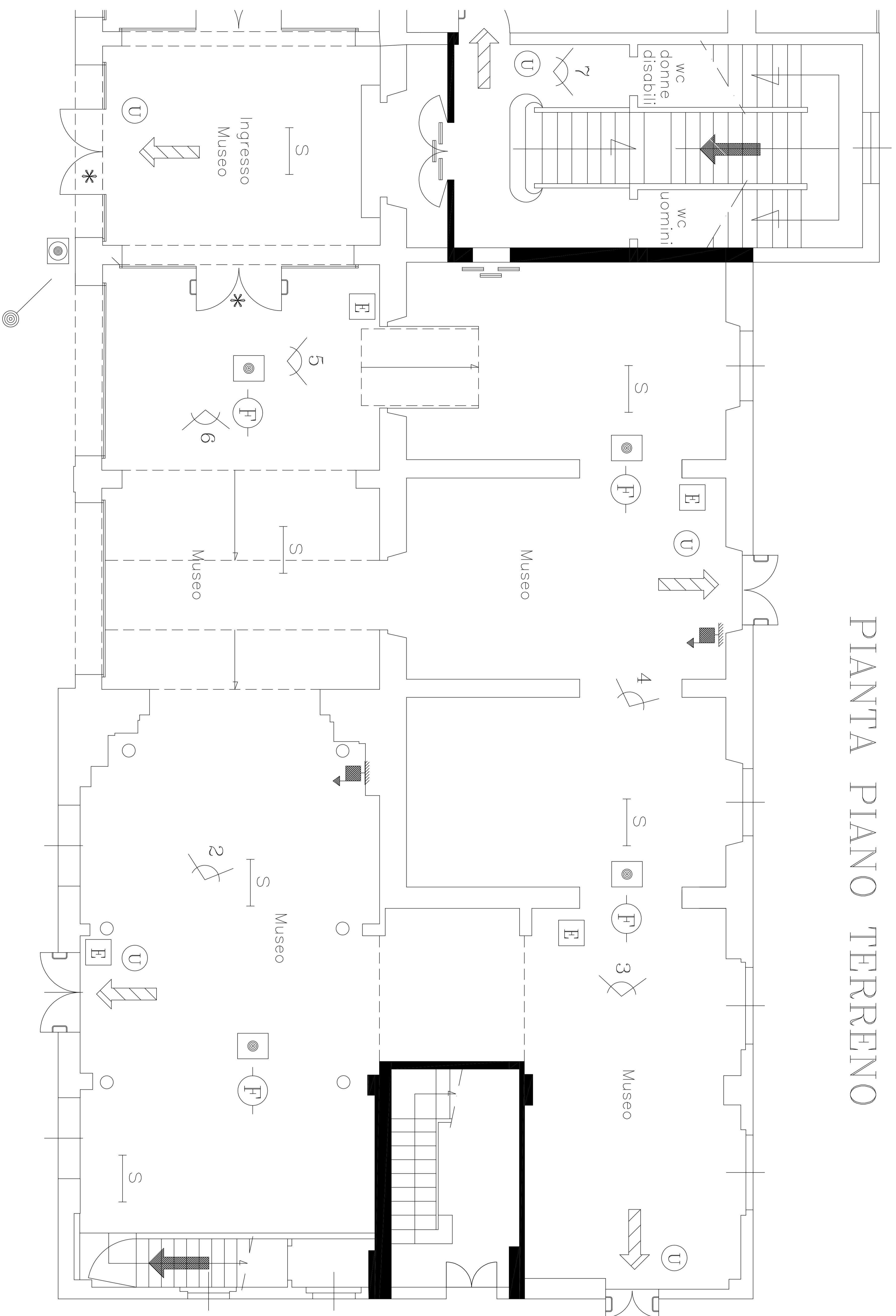
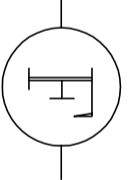
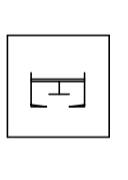
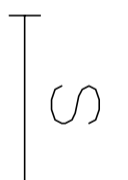
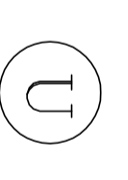
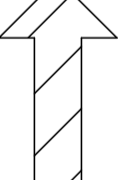
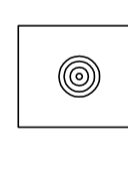

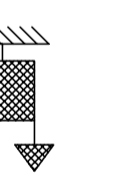


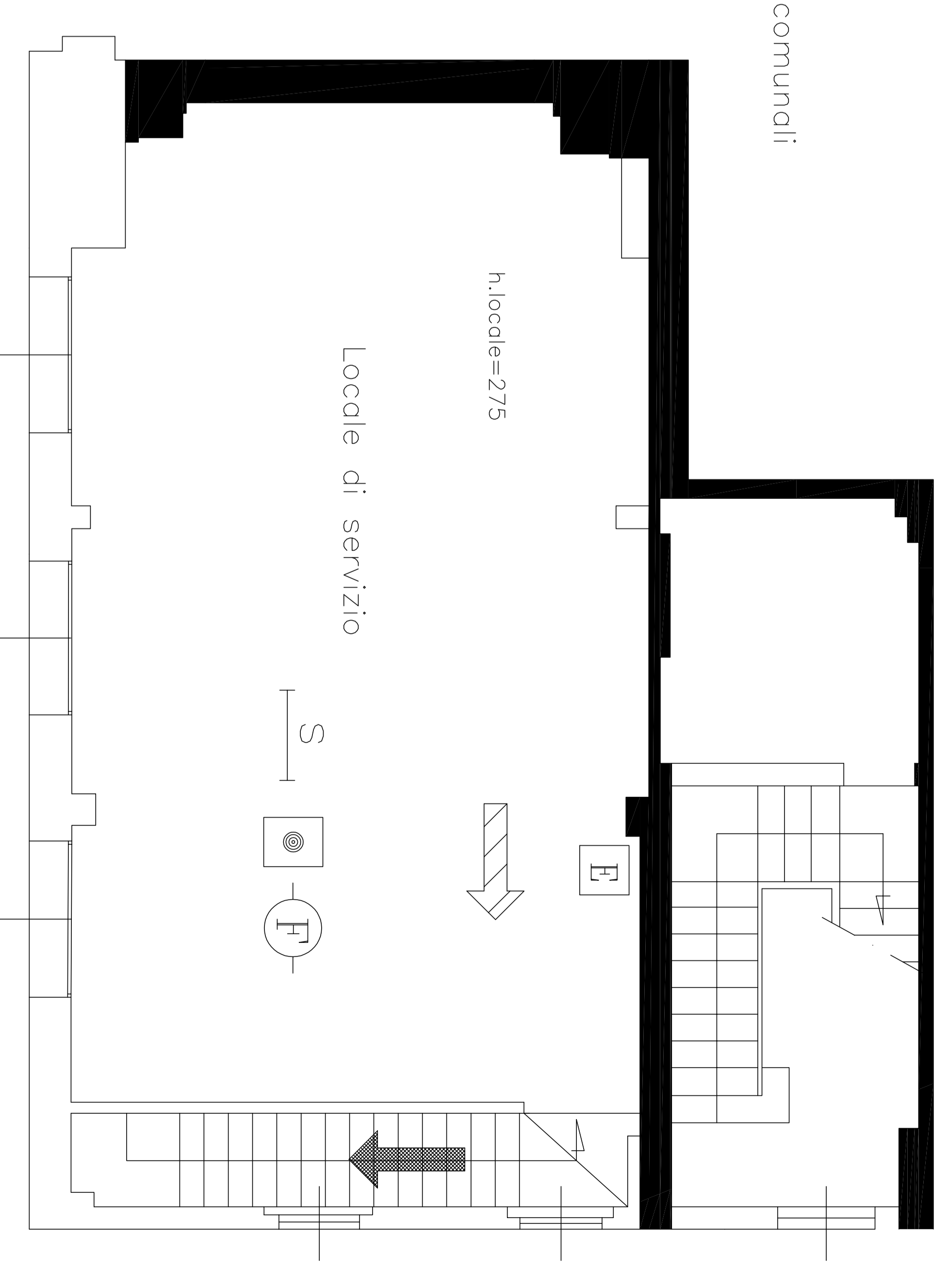
PIANTA PIANO TERRENO



SIMBOLI GRAFICI

-  Locale servito da rilevatori incendio
-  Estintore
-  Uscite di emergenza
-  Uscite di emergenza
-  Percorso di uscita orizzontale
-  * Locale servito da sistema di allarme costituito da segnalatori e avvisatori ottici e acustici
-  * Porte mantenute aperte in presenza di persone all'interno del locale
-  * Naspo (35 litri/minuto – pressione: 1,5 bar al bocchello)

Ingresso
agli uffici
comunali



PIANTA PIANO AMMEZZATO